



Replacing N-300 PCB



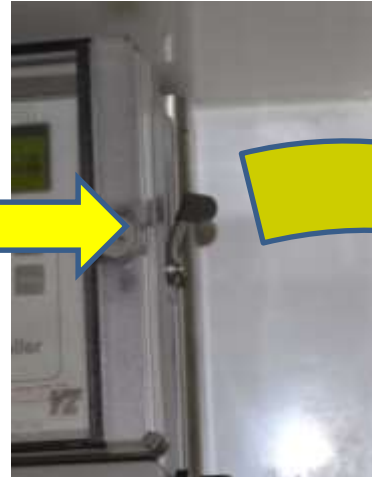


Replacing N-300 PCB

- Record all Parameters and other operational information from The N-300 if Possible for Use in Programing The new PCB.
- If Parameters are not Obtainable from The Old PCB, Download The Sentry MM-300 To Obtain The Parameters



Begin By Opening the N-300 Door using Access Latch on The Right Side.





Open Door Fully and Turn
Power Toggle Switch OFF.



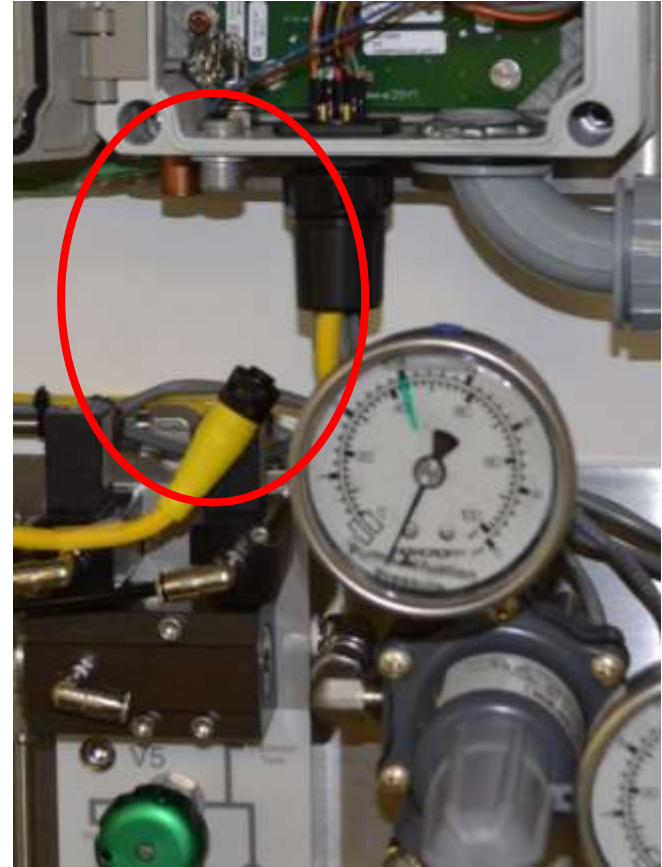


Record I.O. Connections and Remove all I.O. Wiring Connected to The Two Left Terminal Strips





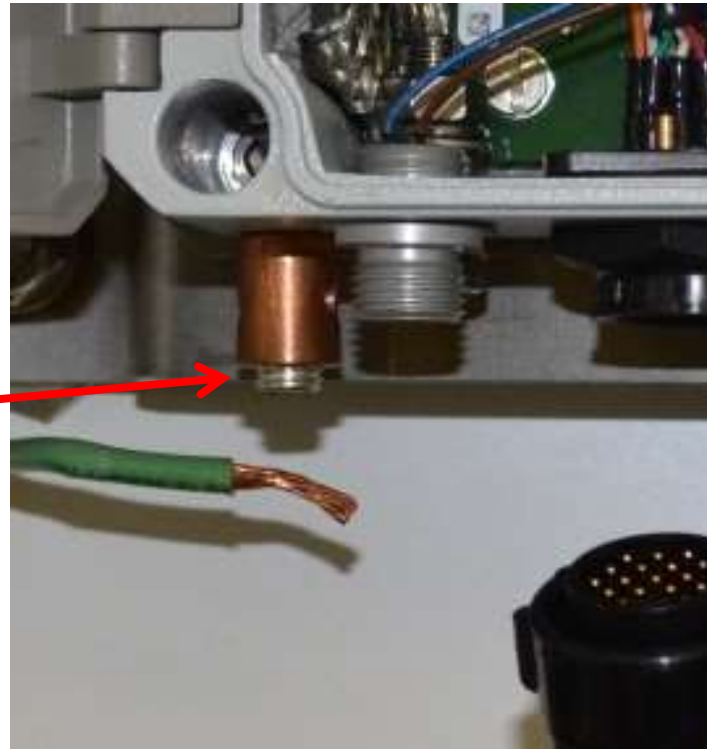
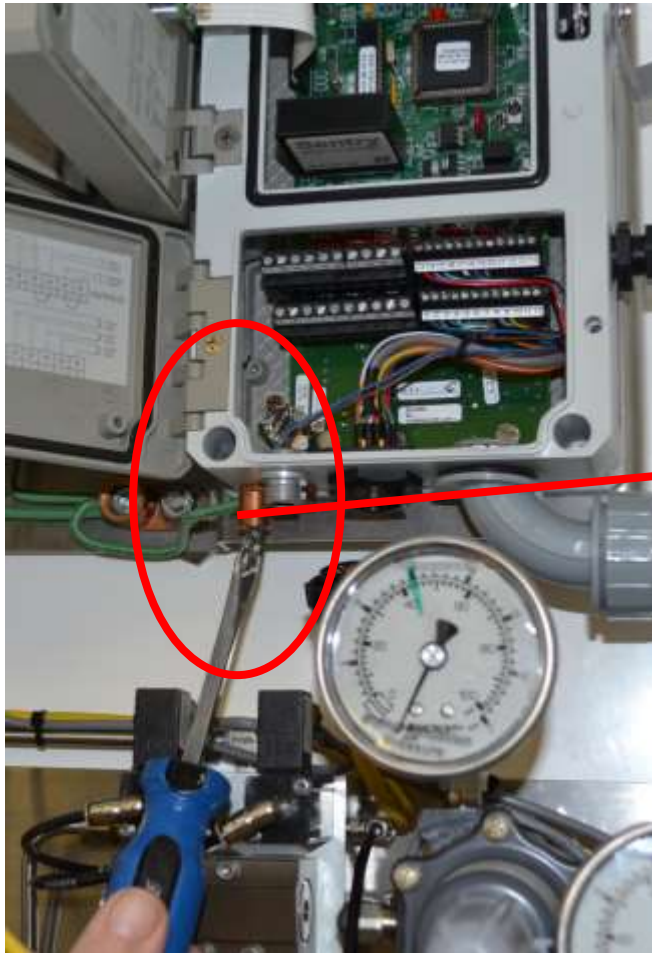
Remove The Yellow Power Supply Cable From The Lower Left of The N-300



Remove The System Cable From The Lower Center of The N-300



Disconnect The Ground Wire From The N-300 Enclosure





Remove Conduit Nut, Conduit Elbow, & Attach Nut Back Onto Elbow





Using An Allen Wrench Remove The N-300 Attaching Screws From The Recess at Each Corner. Remove the Top Right One Last





Place The N-300 Controller on Clean Work Surface



Remove the Ribbon Connector Cable From The Door Switch PCB to The N-300 PCB





Ribbon Connector Cable Removed



Remove the Sentry MM-100



Remove the Upper Cable Connector

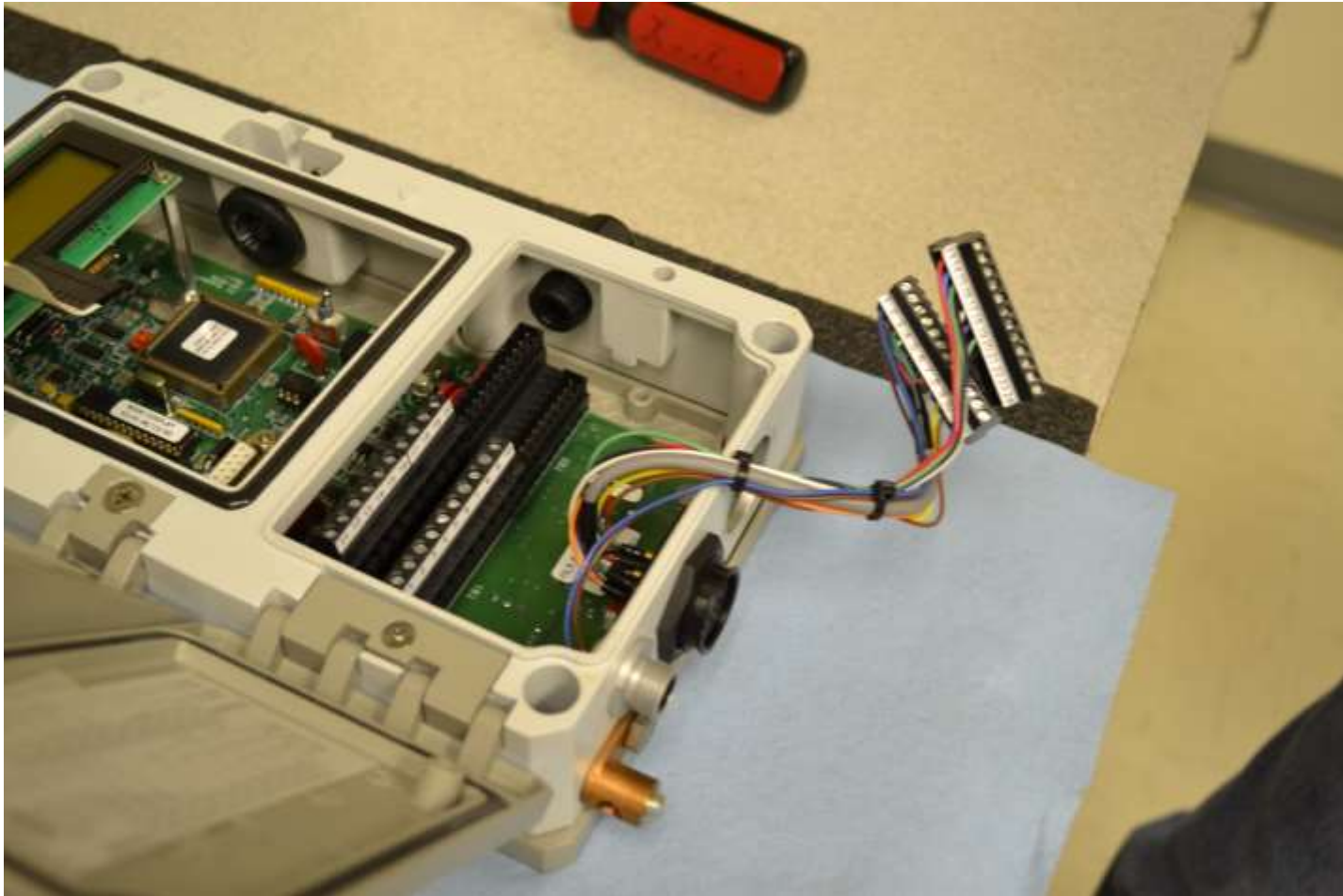


Remove the Lower Cable Connector



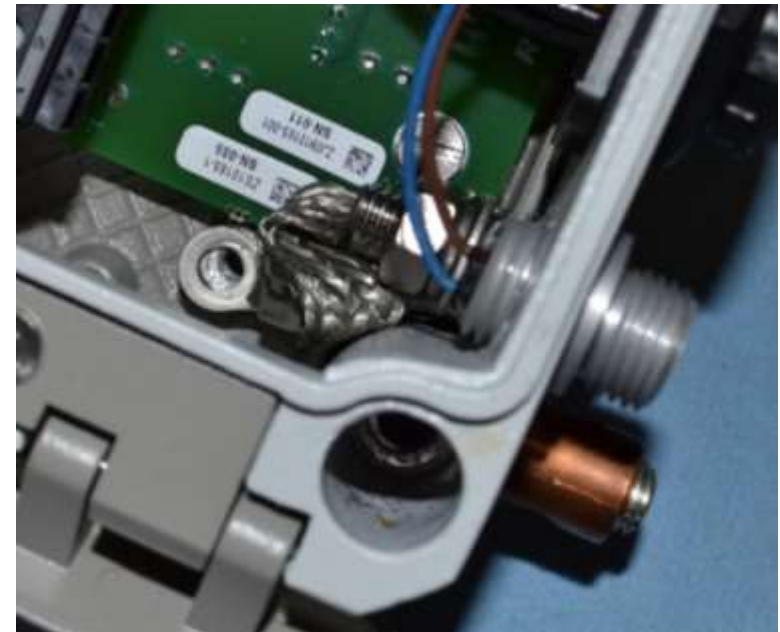
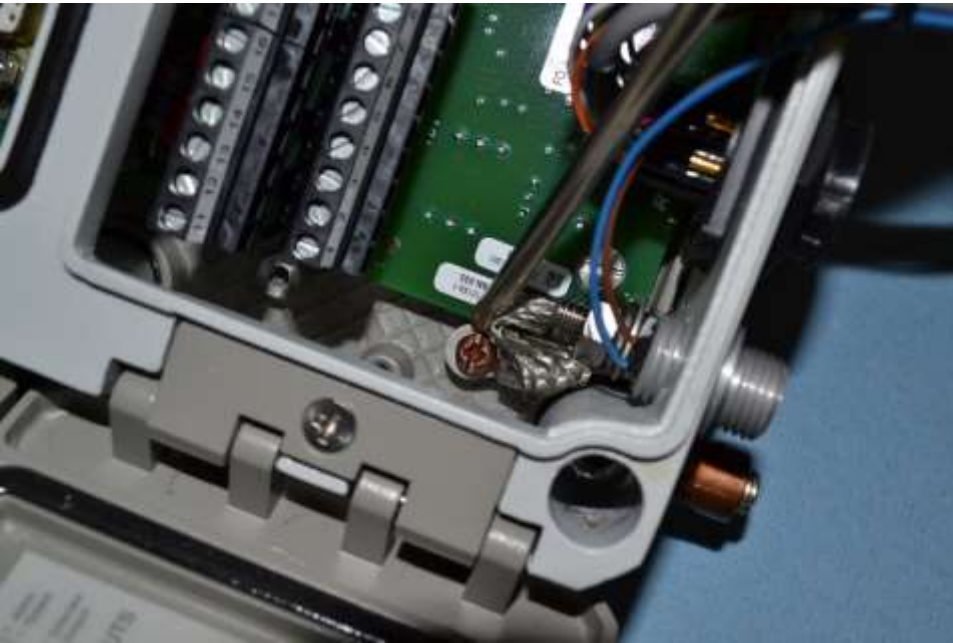


Both Cable Connector Ends Removed



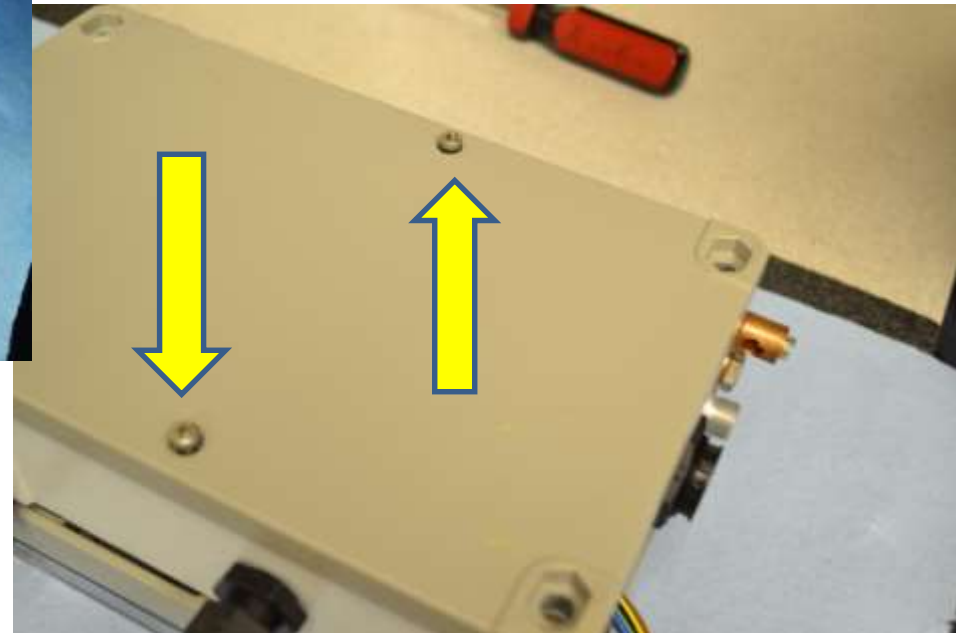


Remove The Grounding Screw From The Lower Left Corned of The N-300 Case



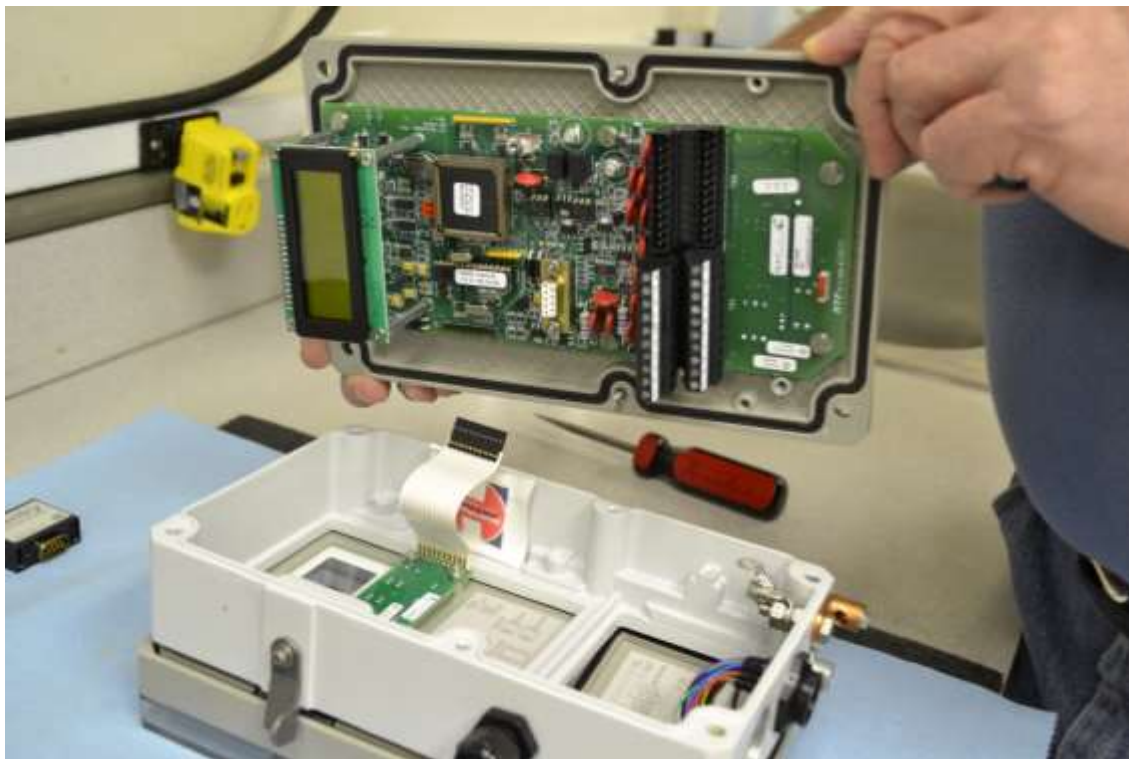


Turn The Controller Over And Remove
The Two Back Plate Retaining Screws





Remove The Back Plate Assembly With The PCB Attached

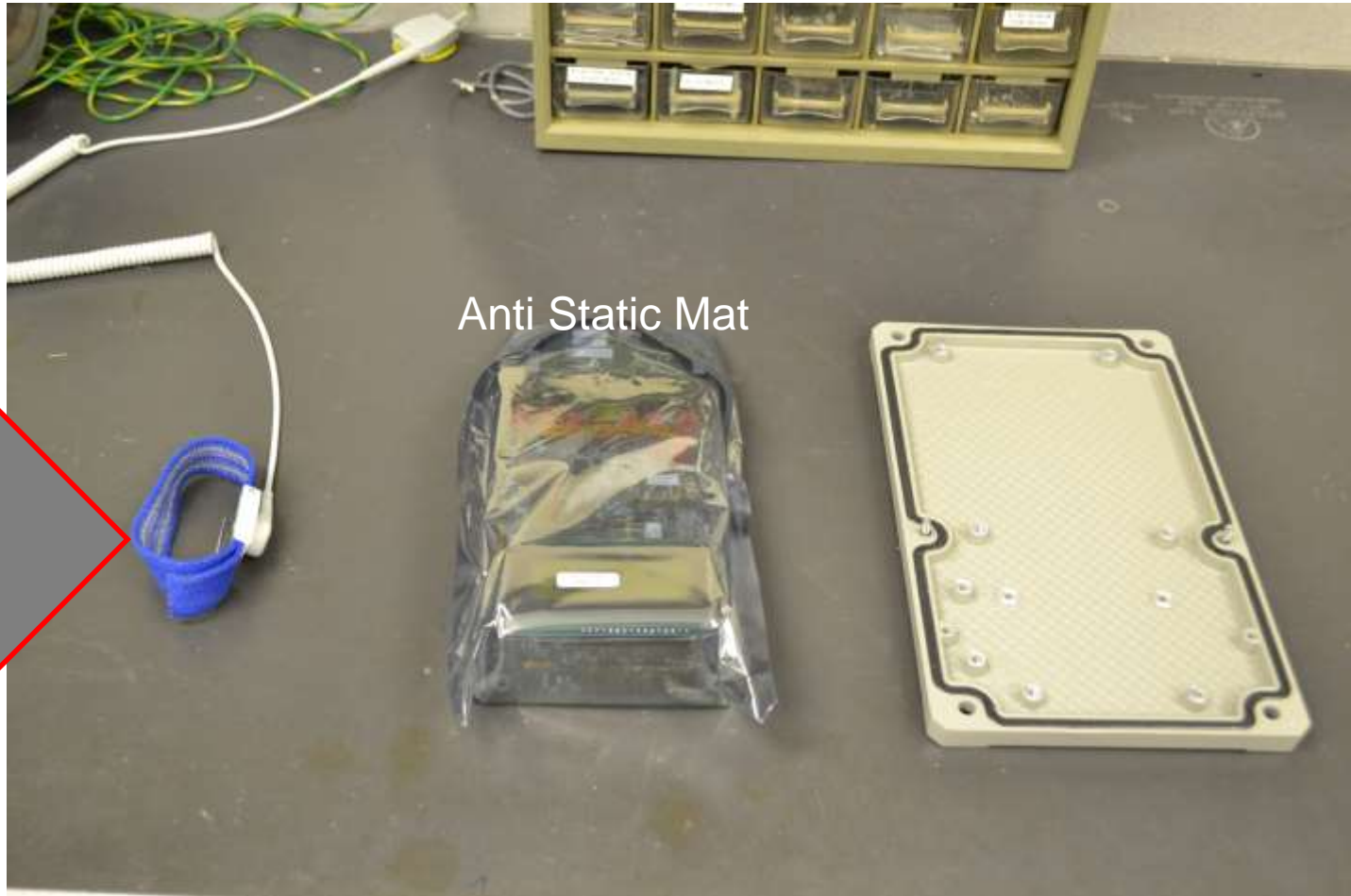


Remove the Six Screws That Attach The PCB To The Back Plate





As You Handle and Work With The New PCB Be Sure You Are Grounded, and Working on An Anti-Static **Surface**



Wrist
Grounding



Carefully Remove The New PCB from
It's Protective Anti Static Packaging





Place the New PCB on The Back Plate



Verify The Switch at the Bottom of The PCB is Slid To The Right





Verify Both of the Switches Above
the Main Processor are Slid to The
Right





Replace the Six Screws Attaching The PCB to The Back Plate



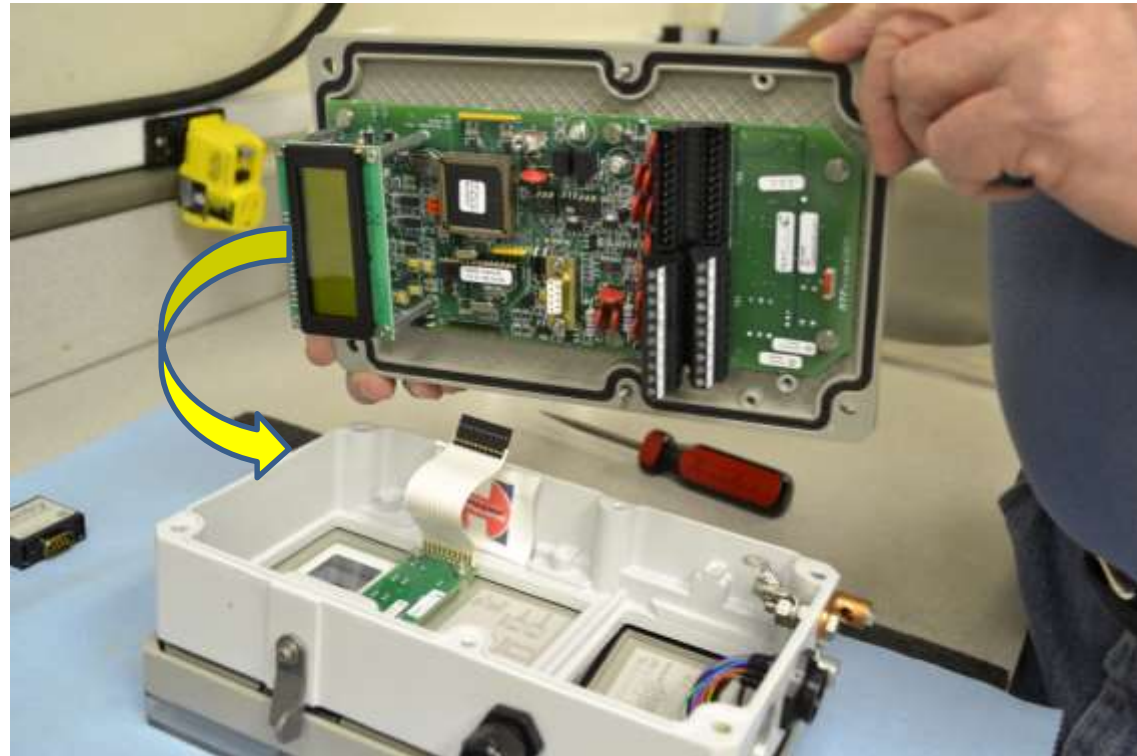


Gather all Other Previously Removed Parts For Re-Assembly



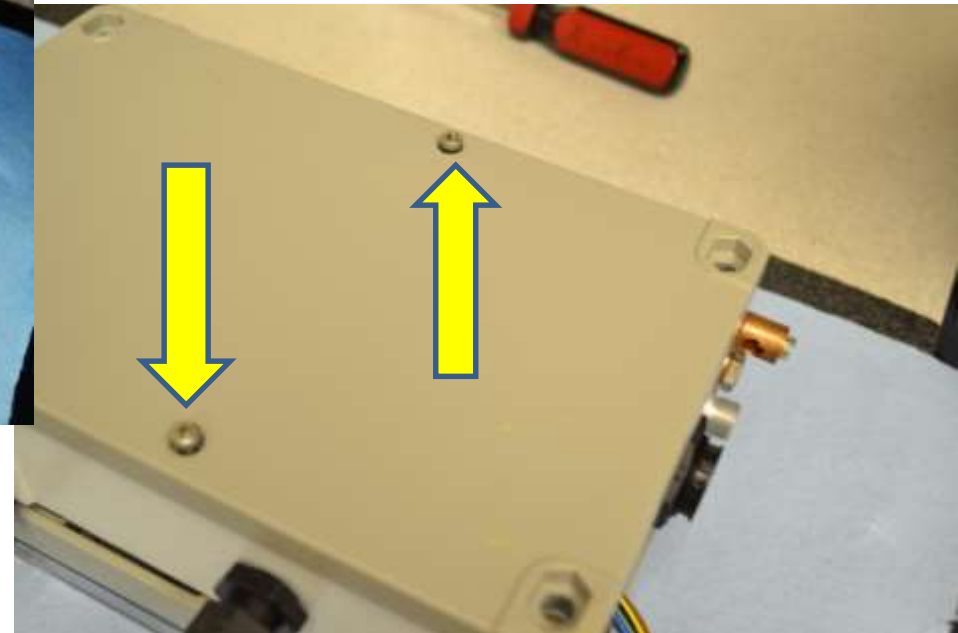


Replace The Back Plate Assembly With The PCB Attached



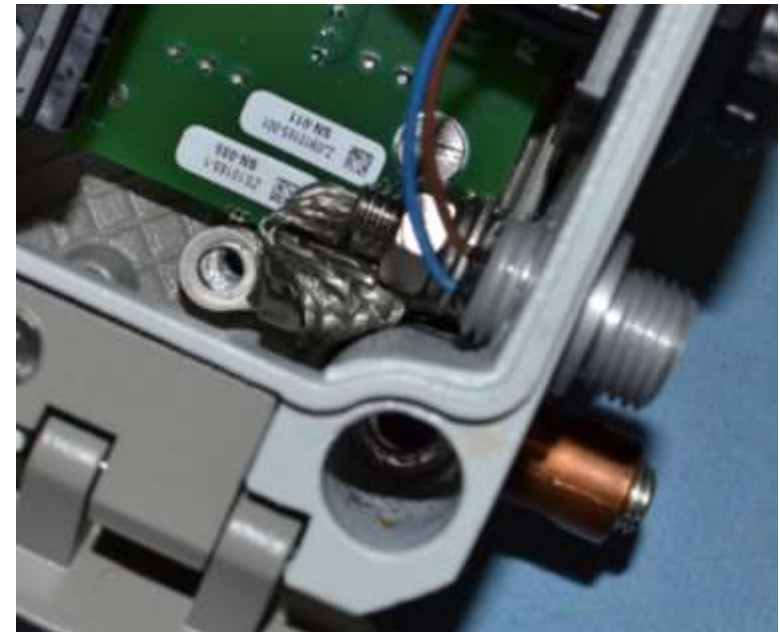
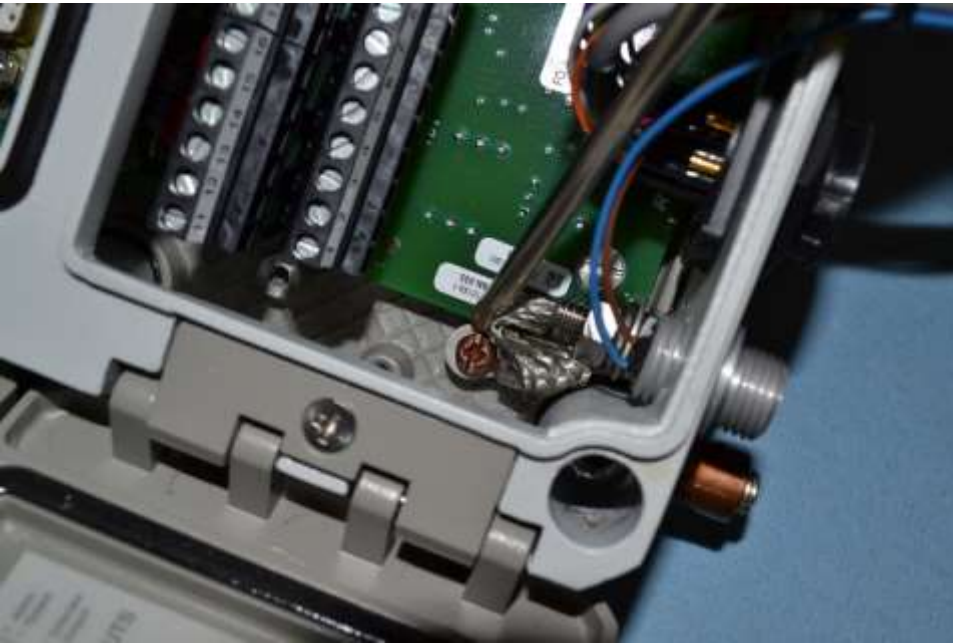


Attach The Two Back Plate Retaining Screws



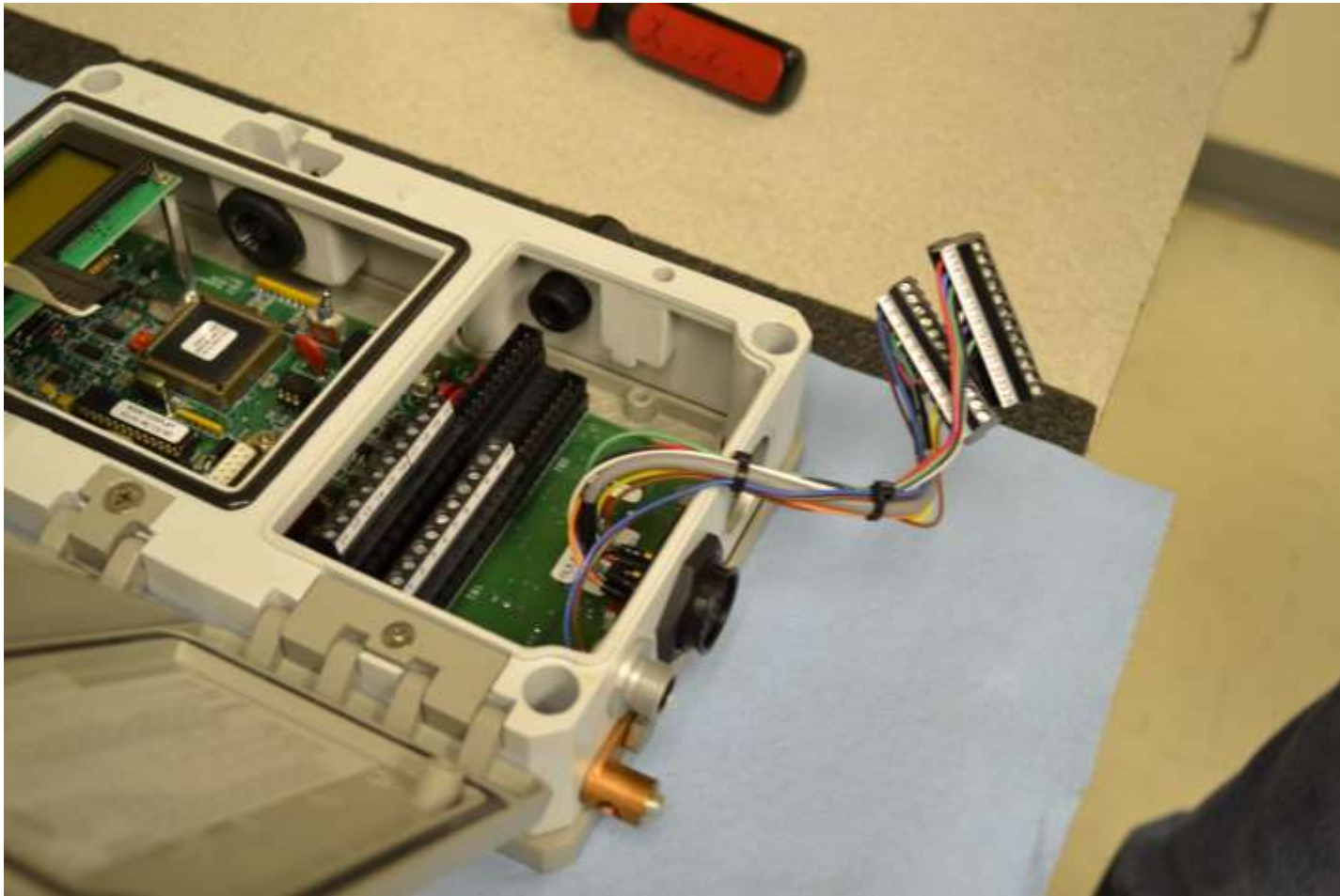


Attach The Grounding Screw At The Lower Left Corned of The N-300 Case





Install Cable Connector Ends Previously Removed





Connect the Lower Cable Connector
By Pressing Firmly Into Place
Assuring all Pins are Correctly
Aligned





Connect The Upper Cable





Re-Install the Sentry MM-100





Install the Ribbon Connector Cable From The Door Switch PCB to The N-300 PCB





Using An Allen Wrench Install The N-300
Attaching Screws From The Recess at
Each Corner. Beginning with The Top
Right One





Install Conduit Elbow, and Nut, & Attach Nut Back Onto Elbow





Install The Ground Wire To The N-300 Enclosure

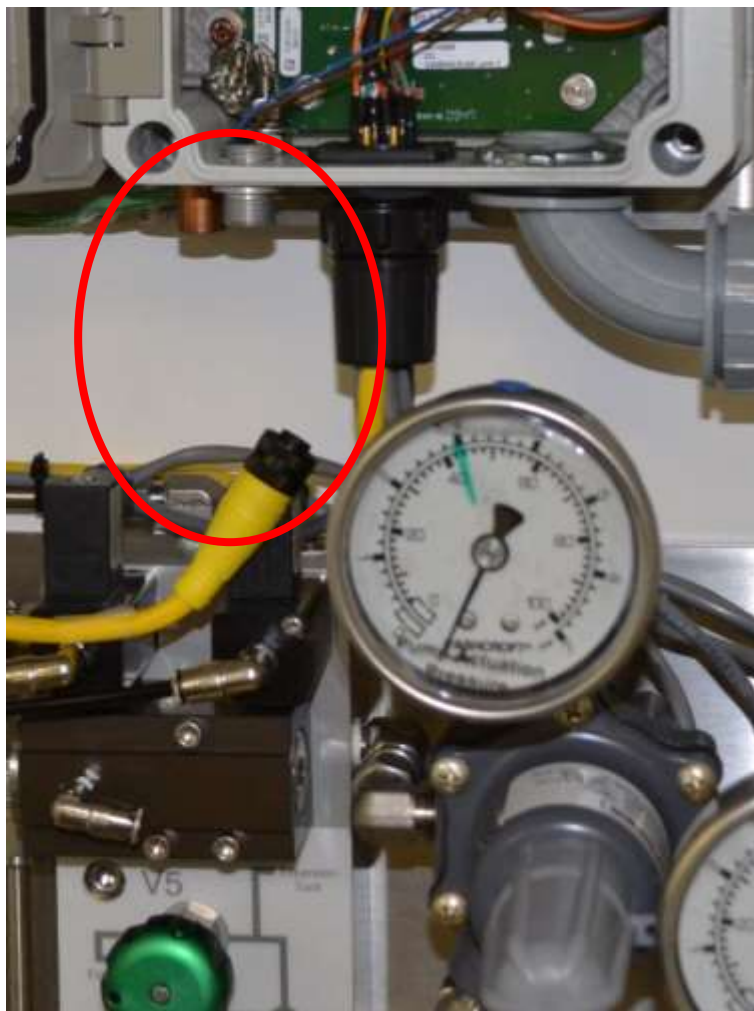




Align The Cable and Install The System Cable at The Lower Center of The N-300.. **Hand Tighten ONLY**



Reconnect The Yellow Power Supply Cable To The Lower Left of The N-300





Reconnect I.O. Connections to The Two Left Terminal Strips





Turn Power Toggle Switch On.





Close the N-300 Door using
Access Latch on The Left Side.





Program N-300 in Accordance with Values Retained from The Previous N-300 PCB or Sentry Memory Module File